



LEGACY MEMBERSHIP

YOUR GUIDE TO JUSTGO AND YOUR AFFILIATION TIER

INTRODUCTION:

Our **Legacy Affiliation** is the highest level of IGA membership for clubs that register all of their members, including squad and recreational gymnasts. This tier offers the most comprehensive support and benefits available, giving clubs full access to everything IGA has to offer. Legacy clubs are eligible for inclusion in national squads, receive exclusive discounts on services, have priority access to safeguarding and compliance support, and are fully integrated into the IGA network. This level of affiliation reflects a club's commitment to quality, development, and the wider independent gymnastics community.

CONTENTS:

Page 2:	Navigating your club profile.
Page 3:	Managing your club members.
Page 4:	Coach requirements on the portal.
Page 5:	How to book onto a course
Page 6:	Hosting an IGA Course
Page 7:	IGA qualification pathways
Page 8:	Online courses
Page 9:	IGA Competitions
Page 10:	Frequently asked questions

EXTRA:

Page 11:	Frequently asked questions
----------	----------------------------



NAVIGATING YOUR CLUB PROFILE

Navigating your club profile on JustGo is essential for managing your affiliation and member information efficiently. Within the club dashboard, you can update your club details, upload attachments, manage your coaches and ensure you are compliant with the IGA Legacy membership policy.

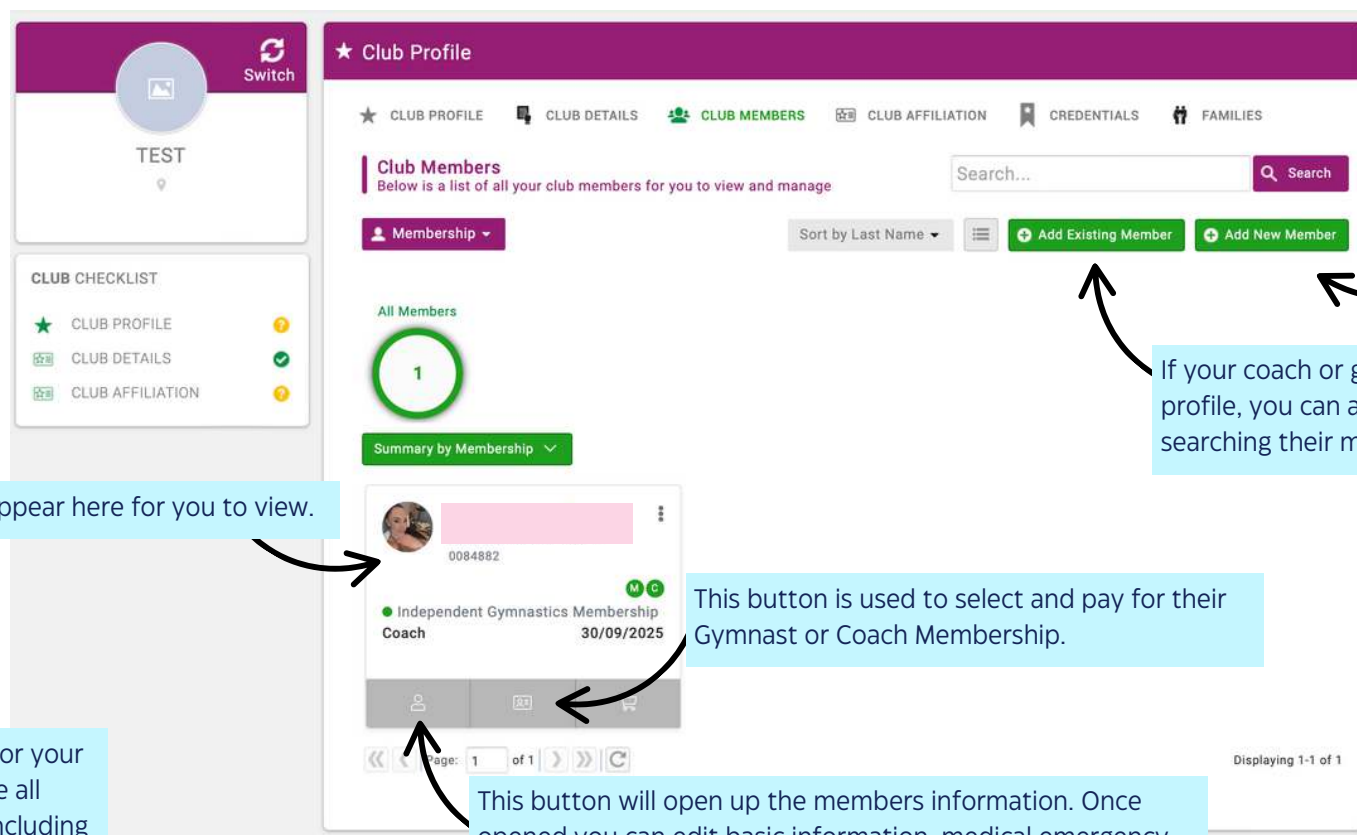
YOUR CLUB PROFILE

Here is your club profile. Please note that once your affiliation is active, your club's details will appear on our website under the Club Finder. We recommend that you only include contact information you are comfortable sharing publicly.

The screenshot displays the 'Club Profile' dashboard. On the left, a sidebar contains a 'Switch' button and a 'TEST' profile card. Below this is a 'CLUB CHECKLIST' with three items: 'CLUB PROFILE' (marked with a green star), 'CLUB DETAILS' (marked with a green checkmark), and 'CLUB AFFILIATION' (marked with a yellow question mark). A callout box points to the green star, stating: 'Green ticks will appear here when you are fully compliant.' The main content area has a purple header '★ Club Profile' and a navigation bar with tabs: '★ CLUB PROFILE', 'CLUB DETAILS', 'CLUB MEMBERS', 'CLUB AFFILIATION', 'CREDENTIALS', and 'FAMILIES'. The 'CLUB PROFILE' tab is active, showing a 'Basic Details' section with a placeholder image, the club name 'TEST (CL1119)', and a location pin. A yellow 'Update Details' button is in the top right. A callout box points to this button: 'Click here to update your club details.' Below the club name, there is a section for 'Your contact information will appear here.' with a callout box pointing to it. At the bottom, there are sections for 'Social Media' and 'Attachments'. A callout box points to the 'Attachments' section: 'Upload important club attachments here'. The location 'United Kingdom' is displayed at the bottom of the main content area.

MANAGING YOUR CLUB MEMBERS ON YOUR JUST GO PORTAL

In this section, you can view all coaches and gymnasts linked to your club's portal. From here, you can add or manage their memberships, as well as check the status of their credentials. You can also upload any missing documentation such as DBS certificates, safeguarding qualifications, or coaching awards to ensure they meet IGA compliance standards.



If you are creating the Just Go profile for your coaches you can add a new member here.


If your coach or gymnast has created their profile, you can add them to your club by searching their membership number.

Your members profiles will appear here for you to view.

This button is used to select and pay for their Gymnast or Coach Membership.

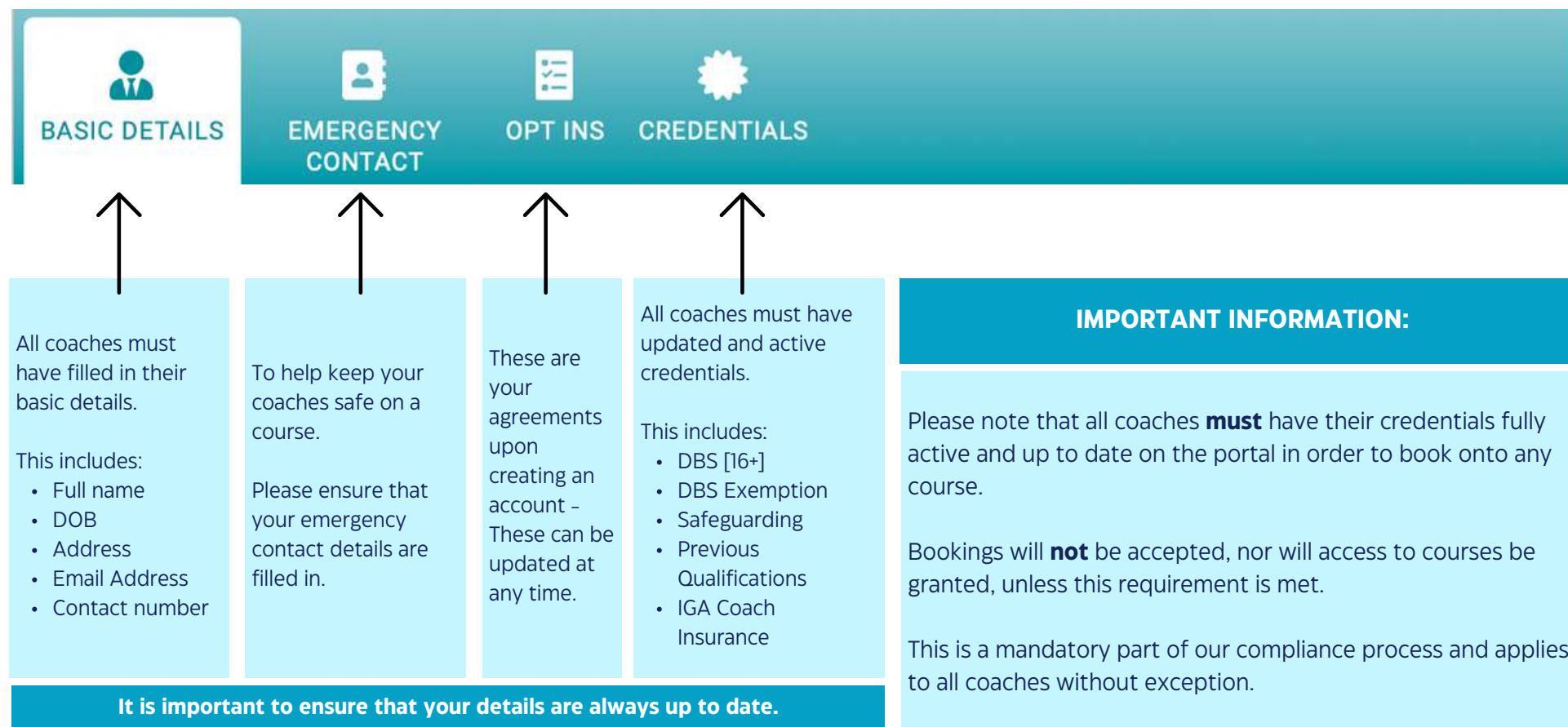
This button will open up the members information. Once opened you can edit basic information, medical emergency information, their roles, and upload and view credentials.

We recommend all coaches have an emergency contact added in case an emergency occurs at an IGA Course.

 If using the Just Go portal for your members, Please ensure all members have full details including address and DOB. Please also ensure that parents create the account in the **gymnast's name!**

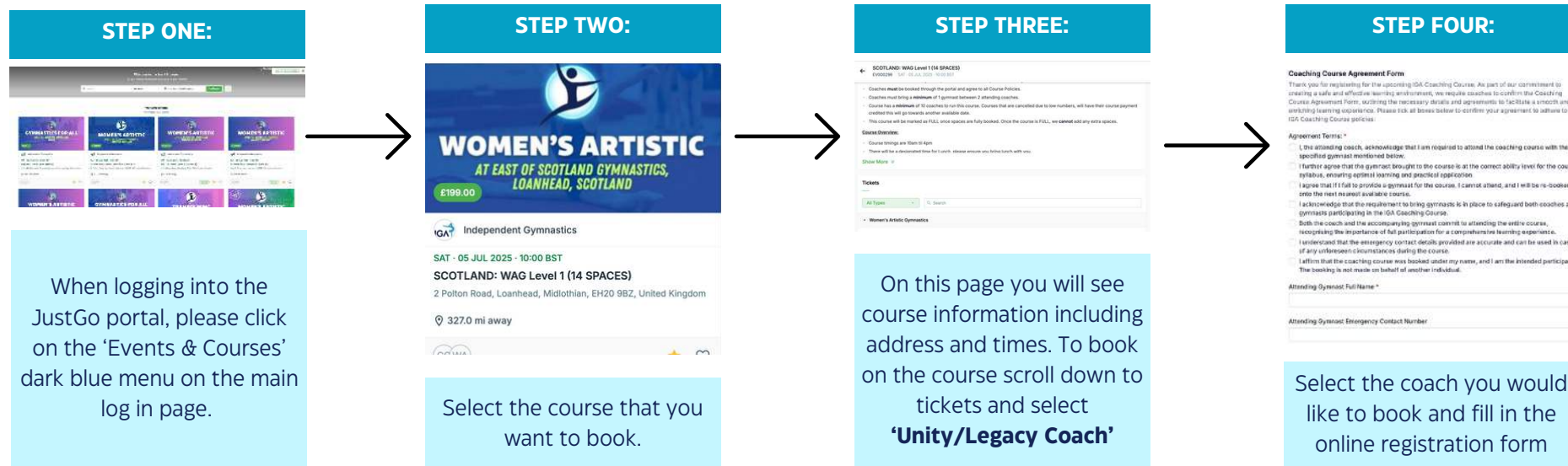
COACH REQUIREMENTS ON THE JUST GO PORTAL

To be recognised as a Legacy Coach under our affiliation, it is essential that all coaches remain fully compliant with our requirements. This ensures that every coach and every course delivered under our affiliation—regardless of the specific services or platforms they use—meets our standards for safety, quality, and safeguarding. Maintaining this level of oversight allows us to uphold the integrity of our programmes and provide assurance that all affiliated coaching activity is delivered in a safe and responsible manner.



HOW TO BOOK ONTO A COURSE

All course bookings must be made via the online portal — this is a mandatory requirement. This applies to both individual coaches booking directly and clubs hosting courses. **No** bookings will be processed outside of the portal, and coaches who are not fully compliant will not be accepted onto courses under any circumstances.



IMPORTANT INFORMATION:



Only coaches who appear on the list will be able to be booked onto an IGA Courses. Those who cannot be booked on will be **missing** a credential.



All coaches **MUST** bring one gymnast to a course they are attending. IGA courses are physical and require gymnasts to participate to complete the course.







Please ensure that you have secured a gymnast **BEFORE** booking onto the course – course placements are not secure until a gymnast name is added.

HOSTING AN IGA COURSE

IGA is proactive and committed to making coach education as accessible and flexible as possible. With that in mind, we are able to deliver coaching courses at your venue, provided the location is approved and meets our required standards.

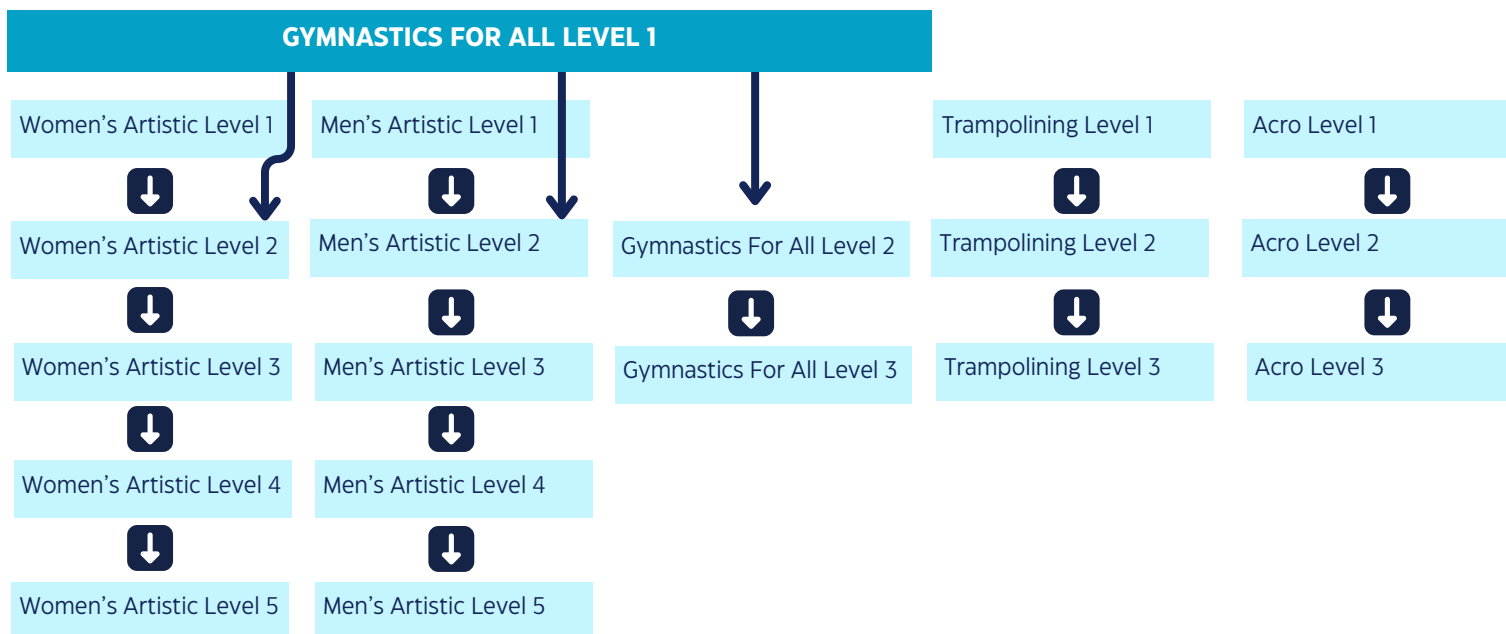
STEP ONE:	Fill in our course hosting online form, This will help our team understand your club setting and what courses can be run at your venue.	LINK!
STEP TWO:	Once approved by our Team, we will contact you to secure a date and time for your course. Most courses are 10am til 4pm.	
STEP THREE:	The team will then confirm an allocated Tutor and the course has been added to the JustGo portal and is ready for you to book on your coaches.	
STEP FOUR:	If the venue cost is FREE , you will gain THREE FREE spaces on the course – these will be booked by our team.	
STEP FIVE:	Once payment has been made the coach can attend the course.	

IMPORTANT INFORMATION:

-  Courses **must** have a minimum of 8 coaches booked onto the course for the course to go ahead.
-  If you cannot fill the 8 minimum spaces of 8 coaches, then sadly we cannot come to your venue, unless you can team up with another club to fill the spaces
-  Our **maximum** number of candidates is 20 – If your club cannot fill the spaces we ask that IGA can open the booking up to others in the community.
-  We require a **minimum** of 6 weeks notice when booking a course date, this allows us to promote and fill the spaces.

IGA QUALIFICATIONS PATHWAY

At IGA, we are committed to ensuring that no gaps exist in coach education. To maintain high standards and safeguard both coaches and gymnasts, we have clearly defined pathways in place that must be followed in order to progress to the next stage of qualification. These pathways are designed to build knowledge, confidence, and competence at each level, ensuring that all coaches are fully prepared and compliant before advancing further.

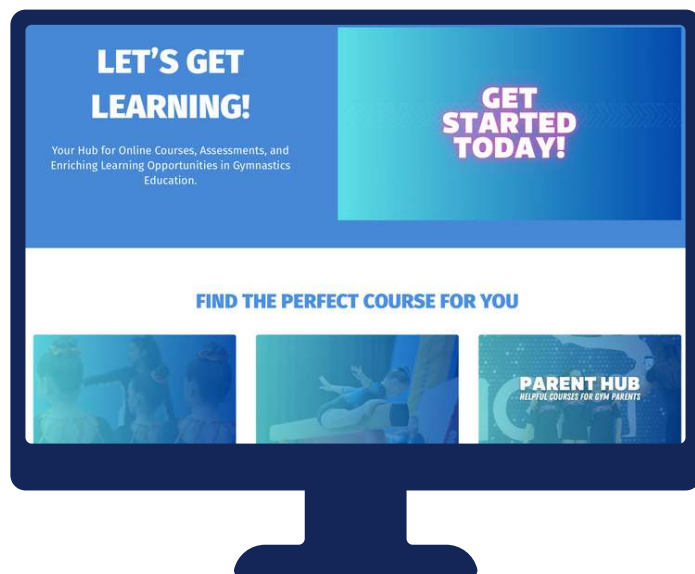


IMPORTANT INFORMATION:

- ❗ Coaches must not skip over to other disciplines – it is important that coaches fulfil the level before, and if starting a new discipline, begin at the beginning with a Level 1
- ❗ The only course that can be skipped is WAG/MAG Level 1 provided the coach has participated in a GFA Level 1.
- ❗ Please be aware each discipline has unique learning attributes, and it is important that coaches are ready for the courses they are booked onto as each course comes with a unique set up. This may include online assessments and video assessments.

ONLINE COURSES

IGA Legacy Affiliation coaches have the opportunity to take full advantage of our wide range of online courses. These flexible learning options are designed to support coaches in developing their knowledge and skills at their own pace, from any location. Whether you're looking to complete safeguarding or theory modules, our online platform ensures that Access coaches can continue their education conveniently while remaining fully compliant with IGA standards.



- ♥ Safeguarding courses for 14–15 years old/16+ and adults
- ♥ Welfare Officer Course
- ♥ Free courses such as The Power of Positive Coaching and Effective Communication with Parents
- ♥ Coaching Course Assessments
- ♥ Parent Hub - FREE Courses for parents to understand the world of gymnastics

AND MORE!

[DIRECT LINK TO OUR ONLINE COURSES](#)

Please note our online courses are not connected to JustGo . This is a unique platform therefore the coaches will need make an account in their own details to access the courses.

COMPETITIONS

As part of your Legacy Membership, your club has the opportunity to book onto **ALL** IGA Gymnastics competitions, including the popular AcroPad Invitational and Display Events, FlipFest. These events are hosted at various locations across the country and are open exclusively to clubs with active Legacy affiliation. They are designed to be inclusive, accessible, and supportive of all gymnasts, providing a fun and encouraging environment to showcase their skills.



Exclusive for all ages and abilities and is open to everyone!



Includes **ALL** IGA competitions in **EVERY** discipline.



Access to the Technique Toolbox!



Easy to follow handbooks and guidance.

IMPORTANT INFORMATION:



All competition entries **must** be entered via the justGo Portal - gymnasts will need to be registered on JustGo.



Coaches **must** meet the coaching requirements on the handbook for the level of gymnast they are entering.



Coaches and Judges **must** be fully compliant to be on the competition floor.



[Click here to view how to book onto a competition with IGA!](#)



[DOWNLOAD THE GYMNASTICS FOR ALL COMPETITION HANDBOOK](#)

Please note that Legacy clubs are the ONLY tier clubs that can enter everything

FREQUENTLY ASKED QUESTIONS



What are the main benefits of Legacy Affiliation?

Legacy clubs receive a wide range of premium benefits, including, Full access to all IGA resources and support, Eligibility for national squads, Exclusive discounts on IGA services, Priority access to safeguarding and compliance support, Integration into the wider IGA network and development initiatives.



Do we need to affiliate every gymnast in our club?

Yes. All gymnasts attending regular sessions **recreational or competitive must** be affiliated within finishing their three session trial period. Running unaffiliated sessions or withholding registrations is a breach of policy. It also means the gymnast is no longer protected should an incident occur.



Can we downgrade our membership later if we decide to not participate in IGA Events?

Yes. You must submit a formal request. Upon approval, IGA will downgrade your membership and confirm any new obligations.



Do we need a Welfare Officer to join Legacy Membership?

Yes. Every Unity Member club must designate a trained Welfare Officer, responsible for upholding IGA's Safeguarding Policy and acting as the first point of contact for concerns.



What happens if we forget to affiliate a gymnast or coach?

Unaffiliated participants or staff are not covered by IGA insurance and put your entire club at risk. Repeated non-affiliation will result in penalties or suspension.

EXTRA OPPORTUNITIES

As part of your Legacy Membership, your club has the opportunity to get involved in many aspects of IGA beyond standard affiliation. This includes access to a range of extra-curricular activities such as workshops, leadership events, ambassador programmes, and national squad pathways. These opportunities are designed to support the holistic development of your gymnasts and coaches, helping them grow both within and beyond the sport. By participating, your club becomes more deeply connected to the wider IGA community, reinforcing a shared commitment to quality, progression, and positive experiences in gymnastics.

- ♥ Access to National and Regional Squads.
- ♥ Opportunities to Observe on other courses for extra learning
- ♥ Access to the Insight Hub and extra club support.
- ♥ Young people or parents can get involved in volunteering roles at IGA events.
- ♥ Opportunities to progress gymnastics at University Level.
- ♥ Opportunities for an extra surcharge to participate in IAIGC competitions in USA.
- ♥ Join IGA committee's to help shape the way of a dicipline your passionate about.
- ♥ Opportunities to be apart of our Amabassador Scheme

AND MORE!

